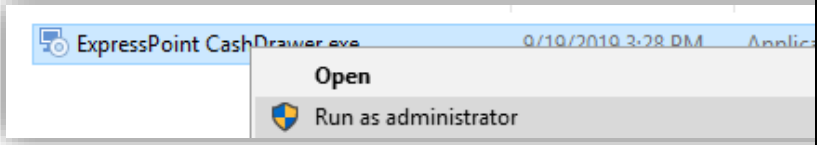
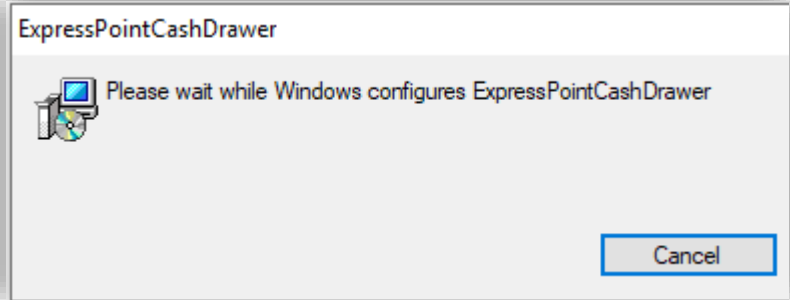
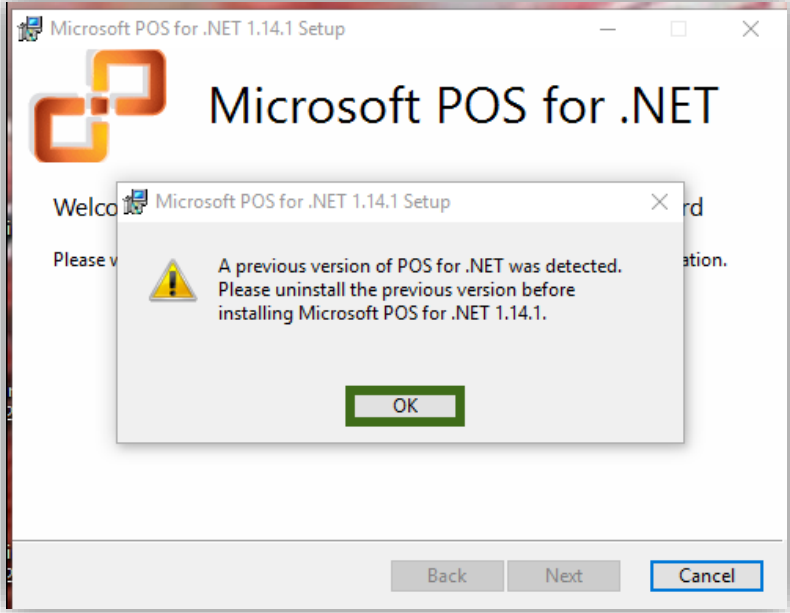
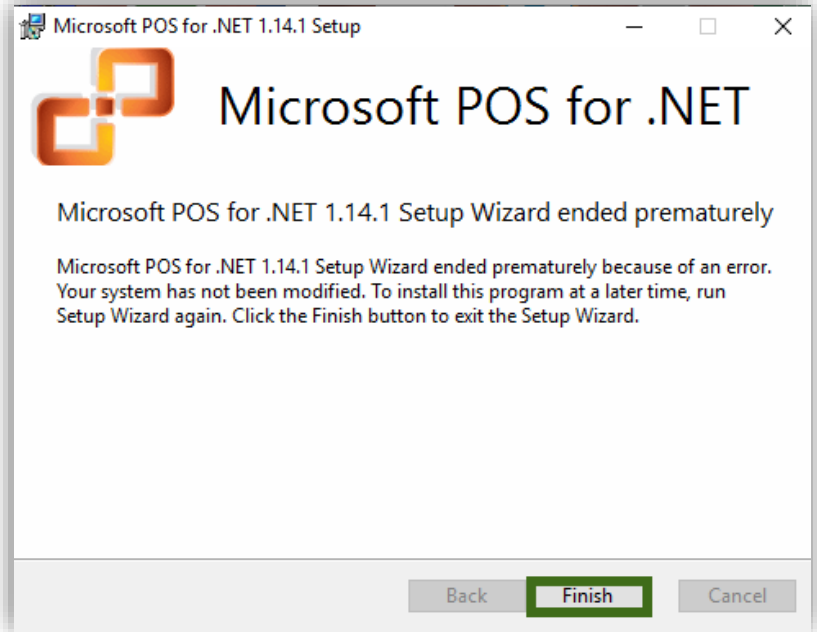


Category: ADMINISTRATION	Document Type: Quick Steps	Author: Customer Care Team	Software Version: 2.0.25	Updated: 01/01/2020
---------------------------------	--------------------------------------	-------------------------------	-----------------------------	------------------------

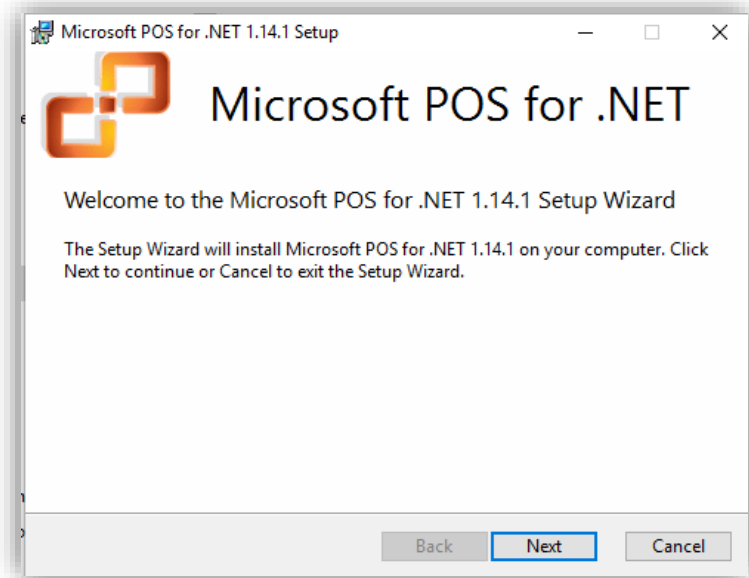
STEPS TO INSTALLING EXPRESSPOINT CASH DRAWER

Process / Descriptions	Images
<p>Click Here for the Installer</p> <p>1. Right click and run the ExpressPoint CashDrawer.exe as administrator</p>	
<p>2. The installer will install the necessary files</p>	
<p>3. You may get a message that you need to uninstall a previous version of Microsoft POS for .NET</p> <p>If you do not get the screen shot to the right, proceed to step 6, otherwise Click OK</p>	

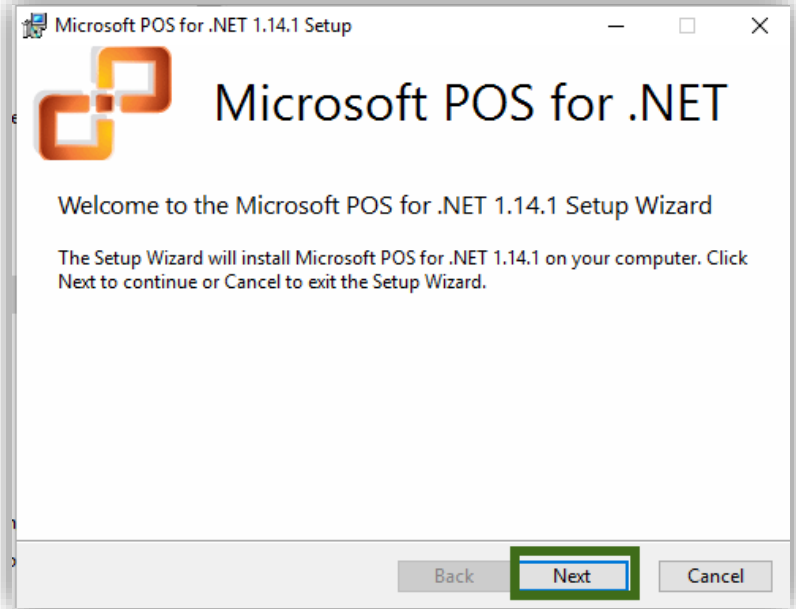
4. Click Finish and Proceed to step 12



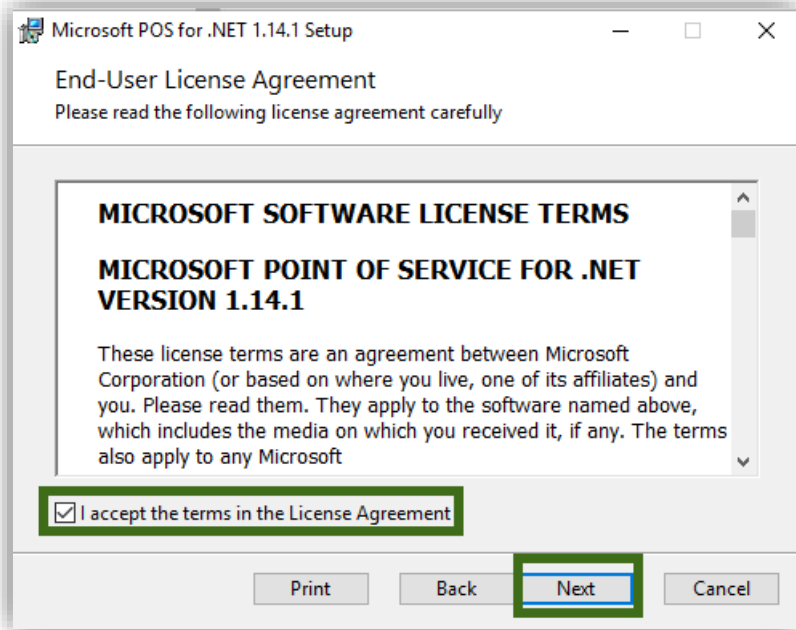
5. Install Microsoft POS for .NET 1.14.1 from the ExpressPoint CashDrawer.exe from step 2



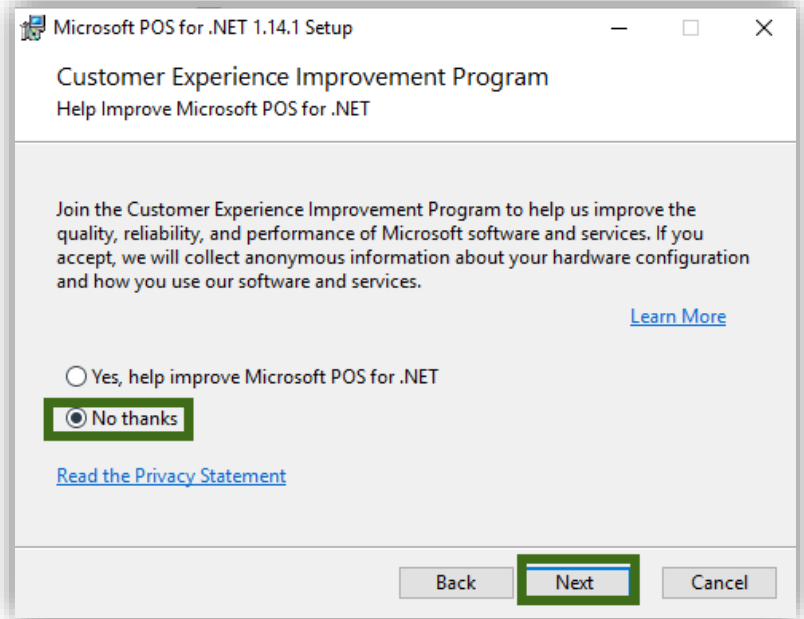
6. Click Next



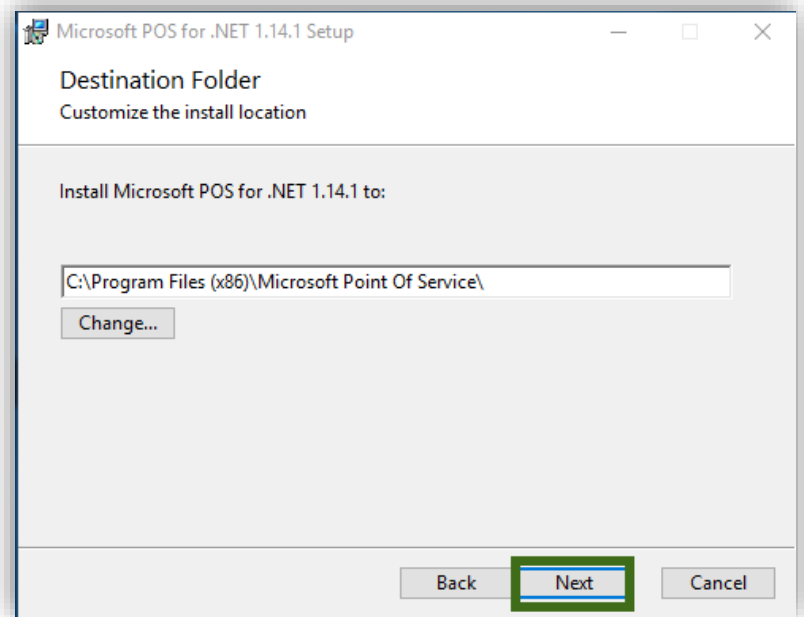
7. Check box that says I accept the terms and License Agreement and the click Next



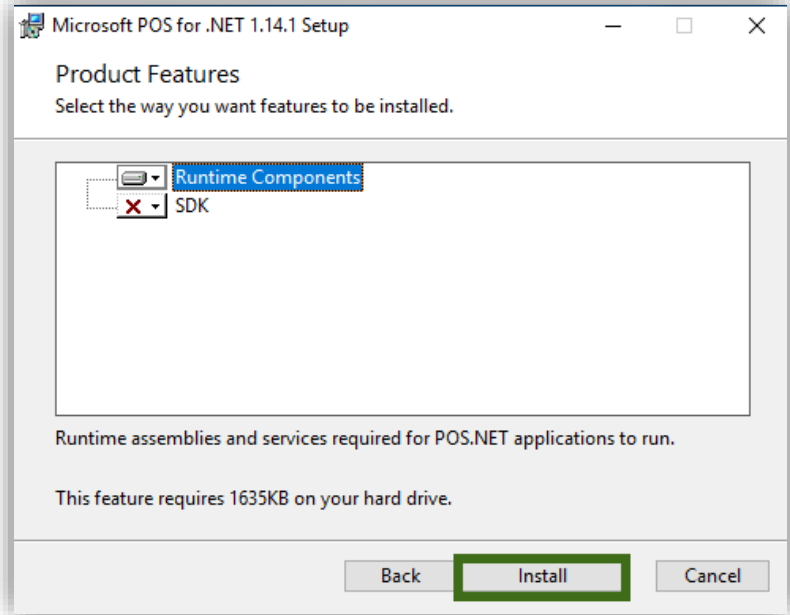
8. Choose the No thanks option and click Next. It will default to No thanks.



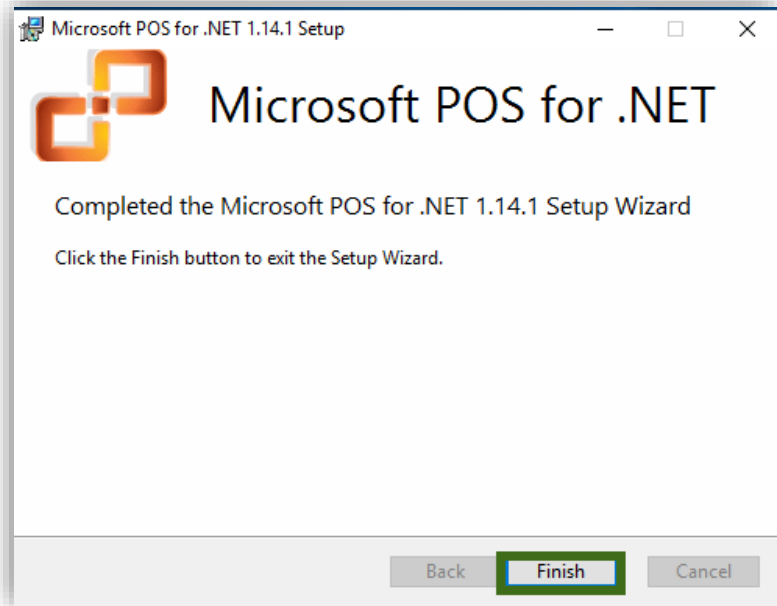
9. Click Next

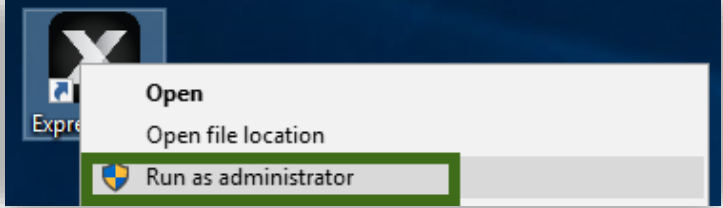
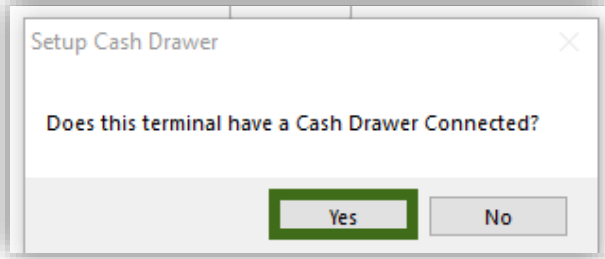
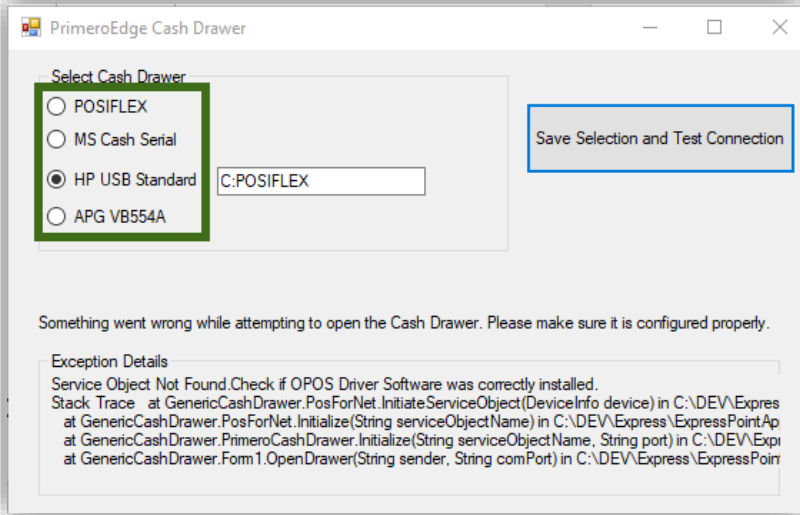


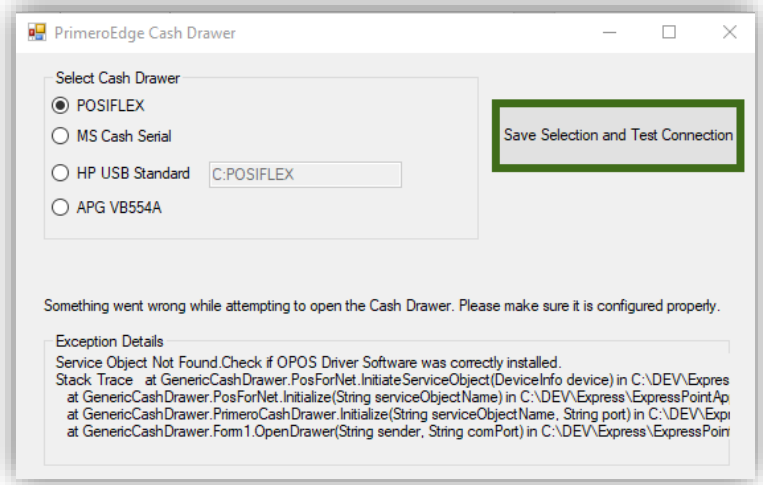
10. Click Install



11. Click Finish



<p>12. Now that ExpressPoint CashDrawer has installed, run ExpressPoint as admin. This can be accomplished by right clicking and run as administrator</p>	
<p>13. Log in to ExpressPoint</p>	
<p>14. Choose open service and you will get a PrimeroEdge Drawer pop up. At this time plug in the usb cash drawer if not plugged in and click Yes</p>	
<p>15. Select your appropriate cash drawer from Select Cash Drawer section by choosing the correct radio button</p> <ol style="list-style-type: none"> If you have POSIFLEX choose POSIFLEX radio button If you have HP choose HP USB Standard radio button. Do not change what defaults in the box If you have APG choose APG VB554A radio button 	

<p>16. Click Save Selection and Test Connection</p>	
<p>17. At this time the cash drawer should open and is ready for use.</p>	