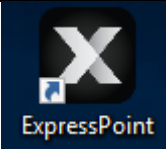
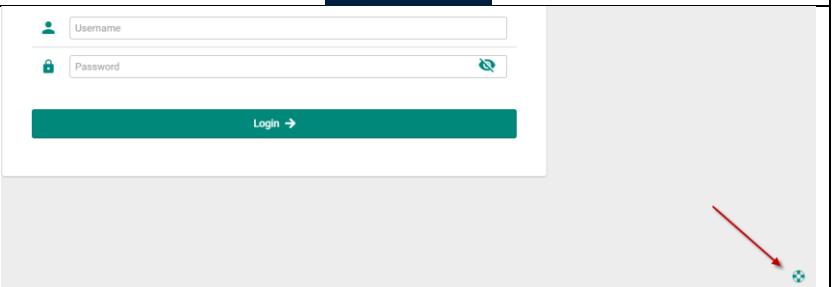
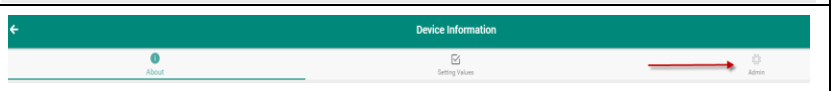
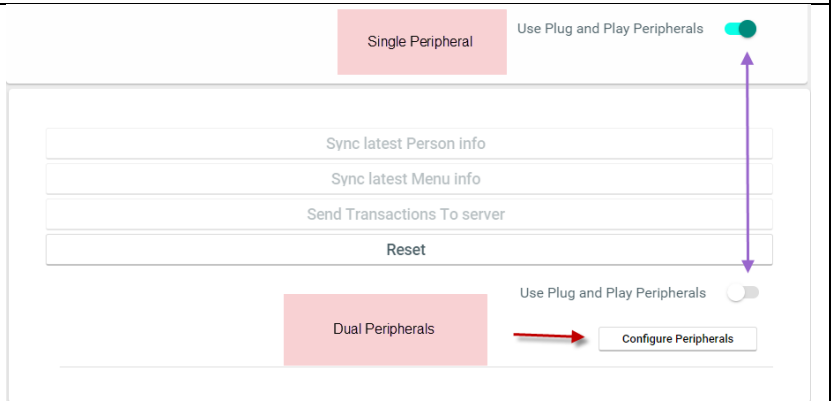
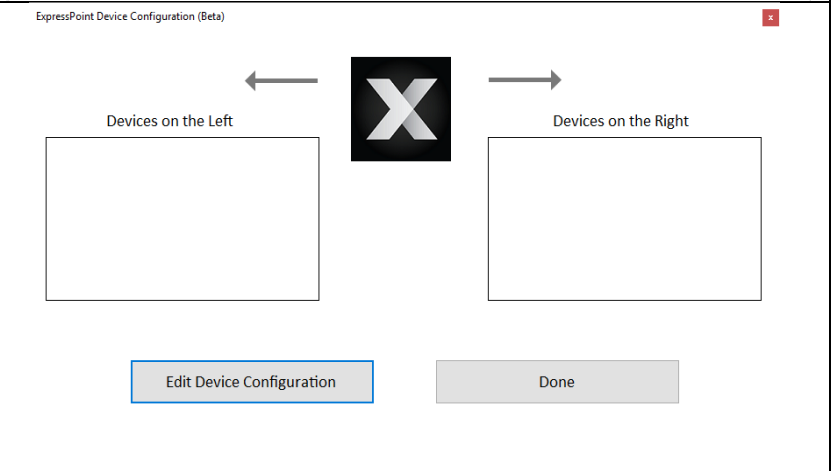


Category: <b>ADMINISTRATION</b>	Document Type: <b>Quick Steps</b>	Author: Customer Care Team	Software Version: 2.0.25	Updated: <b>01/01/2020</b>
---------------------------------	--------------------------------------	-------------------------------	-----------------------------	-------------------------------

## HOW TO CONFIGURE DUAL PERIPHERALS

The following will provide the steps to configure dual peripherals.

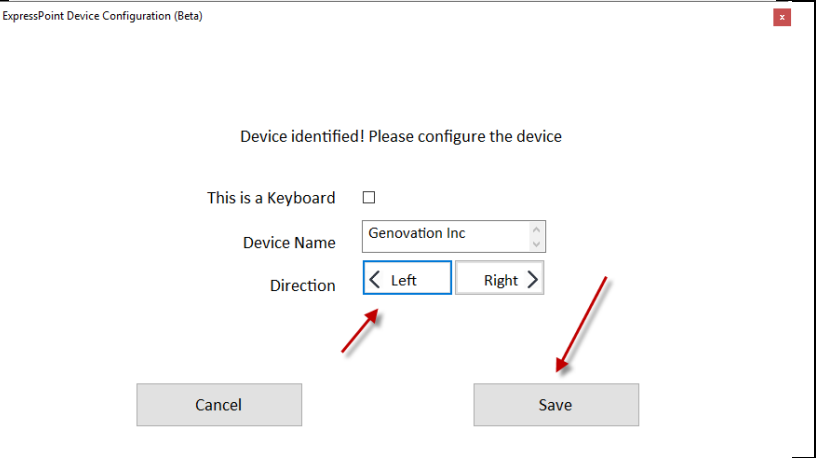
### CONFGIURING DUAL PERIPHERALS

Process / Descriptions	Images
<p>1. Launch <b>ExpressPoint</b> App</p>	
<p>2. Click on the Life Preserver Icon at the the bottom right.</p>	
<p>3. Choose Admin</p>	
<p>4. Toggle the “Use Plug and Play Peripherals” from Green to White (Green = Single Peripheral, White = Dual Peripherals).</p> <p>If not plug and play, click Configure Peripherals.</p>	
<p>5. Click Edit Device Configuration</p>	

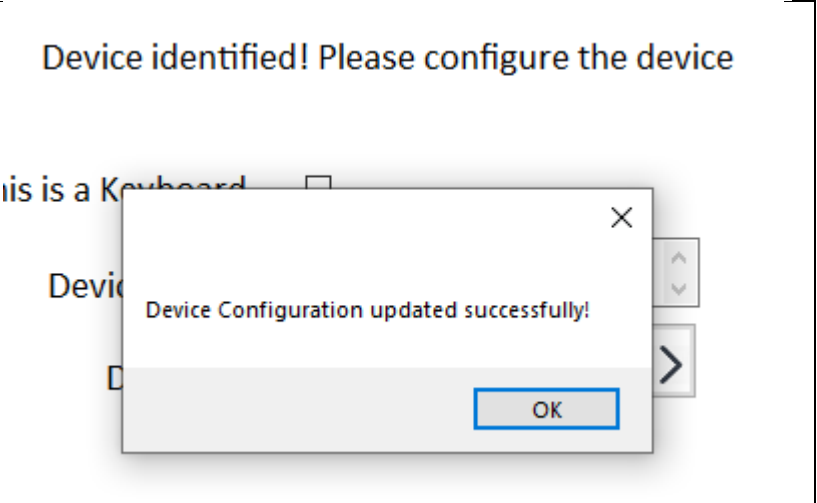
6. Plug in the Device



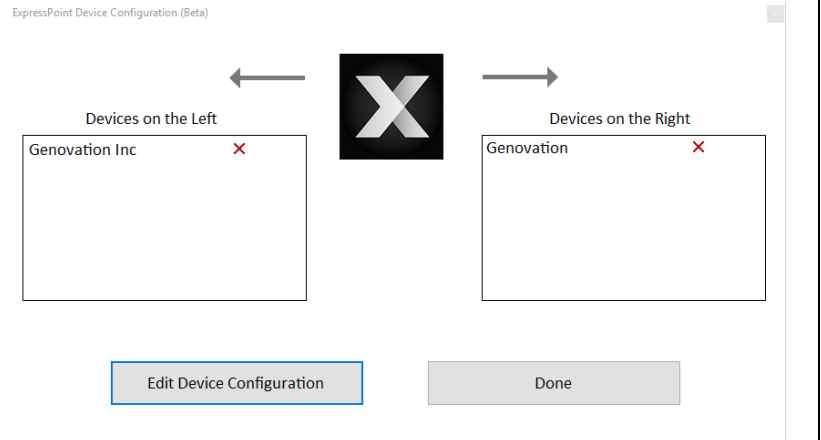
7. Press any key on the device and the configuration page pops up. Follow the onscreen directions and Save. (Genovation 904/905, press any key and hit enter)



8. Device Configuration updated successfully! Click OK.



9. Repeat steps 6-9 to configure another Peripheral. Click Done once completed.



10. Click the arrow in the top left of the screen to go back to the main menu

